

P-PDI / H-di-PDI Family

CAS Registry Number: 1416893-49-6

C₄₈ H₁₈ N₄ O₈

[2,2'(1*H*,1'*H*)-Bianthra[2,1,9-*def*:6,5,10-*d'e'f'*]diisoquinoline]-1,1',3,3',8,8',10,10'(9*H*,9'*H*)-octone

Molecular Weight

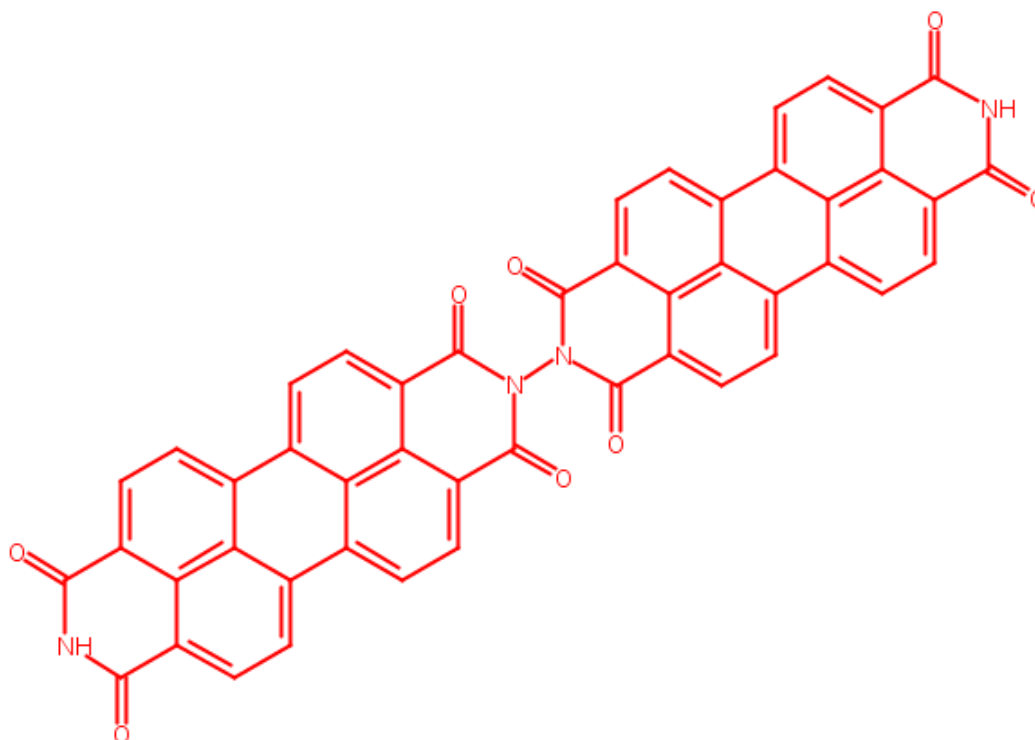
778.68

Density (Predicted)

Value: 1.817±0.06 g/cm³ | Condition: Temp: 20 °C Press: 760 Torr

pKa (Predicted)

Value: 8.93±0.20 | Condition: Most Acidic Temp: 25 °C



P-PDI / H-di-PDI Family

CAS Registry Number: 1422468-36-7

$C_{50}H_{32}N_4O_8$

[2,2'(1*H*,1'*H*)-Bianthra[2,1,9-*def*:6,5,10-*d'e'f'*]diisoquinoline]-1,1',3,3',8,8',10,10'(9*H*,9'*H*)-octone, 9,9'-dimethyl-

Molecular Weight

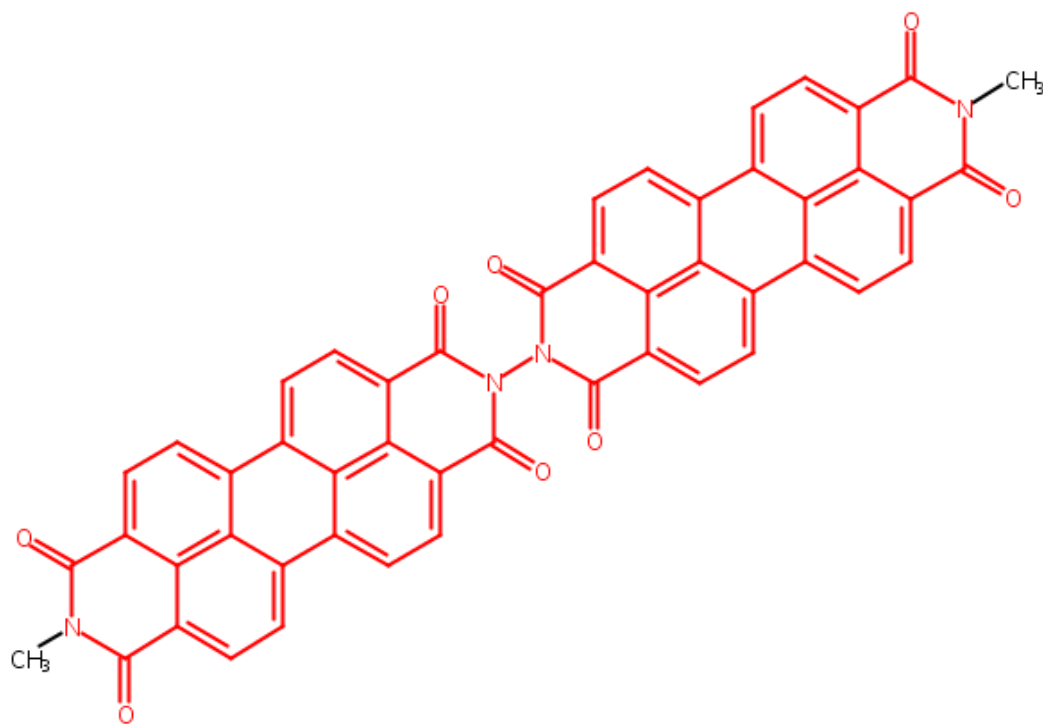
806.73

Density (Predicted)

Value: 1.759±0.06 g/cm³ | Condition: Temp: 20 °C Press: 760 Torr

pKa (Predicted)

Value: -2.38±0.20 | Condition: Most Basic Temp: 25 °C



P-PDI / H-di-PDI Family

CAS Registry Number: 193968-23-9

$C_{54}H_{36}N_4O_8$

[2,2'(1*H*,1'*H*)-Bianthra[2,1,9-*def*:6,5,10-*d'e'f'*]diisoquinoline]-1,1',3,3',8,8',10,10'(9*H*,9'*H*)-octone, 9,9'-dipropyl- (9CI)

Molecular Weight

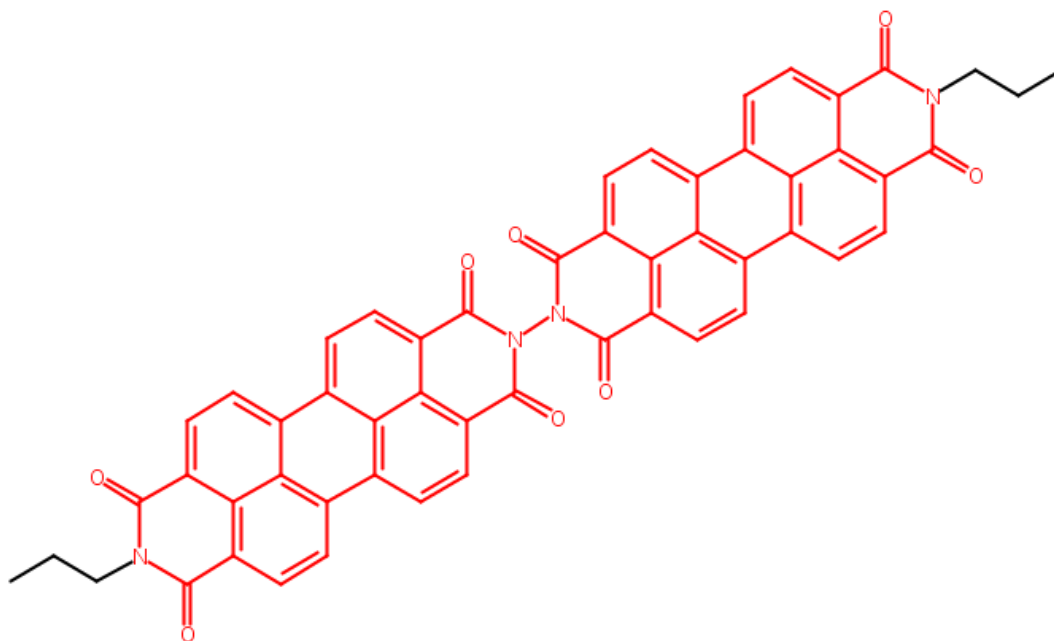
862.84

Density (Predicted)

Value: 1.638±0.06 g/cm³ | Condition: Temp: 20 °C Press: 760 Torr

pKa (Predicted)

Value: -2.38±0.20 | Condition: Most Basic Temp: 25 °C



P-PDI / H-di-PDI Family

CAS Registry Number: 1422468-37-8

C₇₄ H₃₀ N₆ O₁₂

[2,2'(1*H*,9'*H*):9',2''(1''*H*)-Teranthra[2,1,9-*def*:6,5,10-*d'ef'*]diisoquinoline]-1,1',1'',3,3',3'',8,8',8'',10,10',10''(9*H*,9'*H*)-dodecane, 9,9''-dimethyl-

Molecular Weight

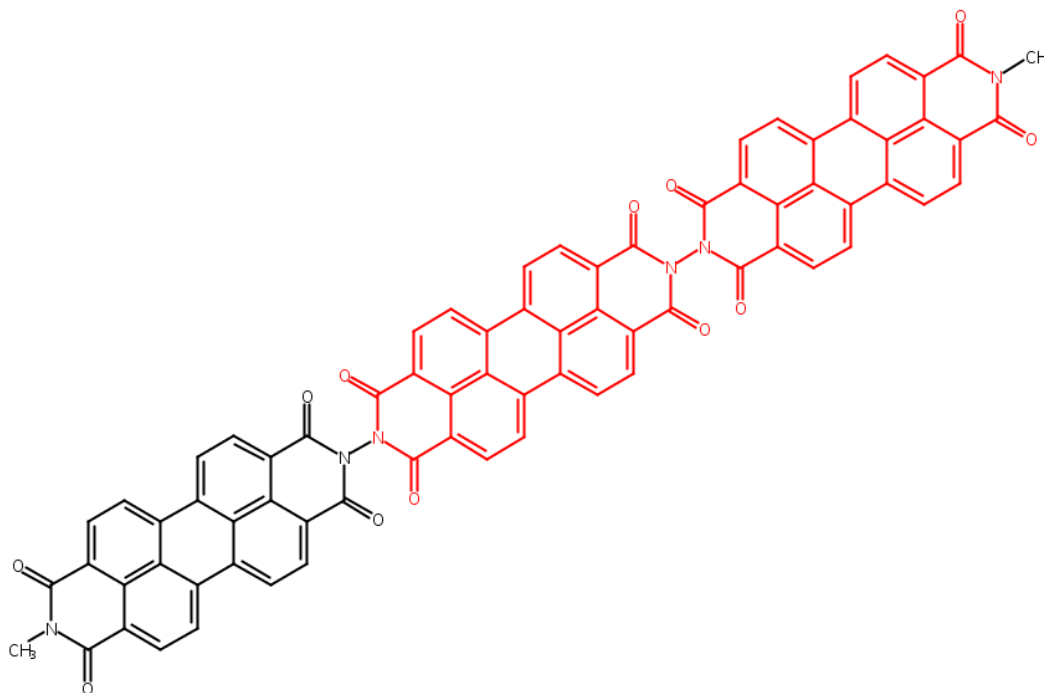
1195.06

Density (Predicted)

Value: 1.826±0.06 g/cm³ | Condition: Temp: 20 °C Press: 760 Torr

pKa (Predicted)

Value: -2.38±0.20 | Condition: Most Basic Temp: 25 °C



P-PDI / H-di-PDI Family

CAS Registry Number: 2241118-62-5

C₆₄H₅₀N₄O₈

INDEX NAME NOT YET ASSIGNED

Molecular Weight

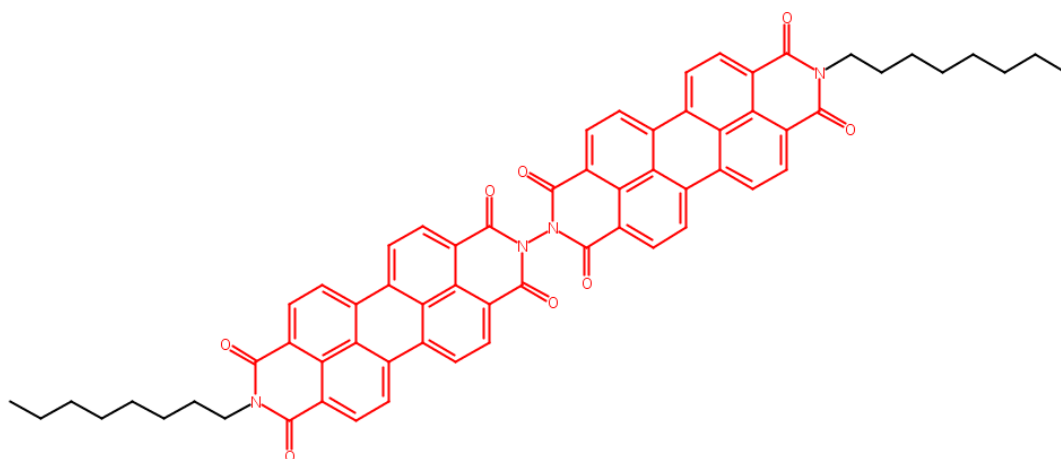
1003.10

Density (Predicted)

Value: 1.450±0.06 g/cm³ | Condition: Temp: 20 °C Press: 760 Torr

pKa (Predicted)

Value: -2.39±0.20 | Condition: Most Basic Temp: 25 °C



P-PDI / H-di-PDI Family

CAS Registry Number: 207393-84-8

$C_{74}H_{76}N_4O_8$

[2,2'(1*H*,1'*H*)-Bianthra[2,1,9-*def*:6,5,10-*d'e'f'*]diisoquinoline]-1,1',3,3',8,8',10,10'(9*H*,9'*H*)-octone, 9,9'-bis(1-hexylheptyl)- (9CI)

Molecular Weight

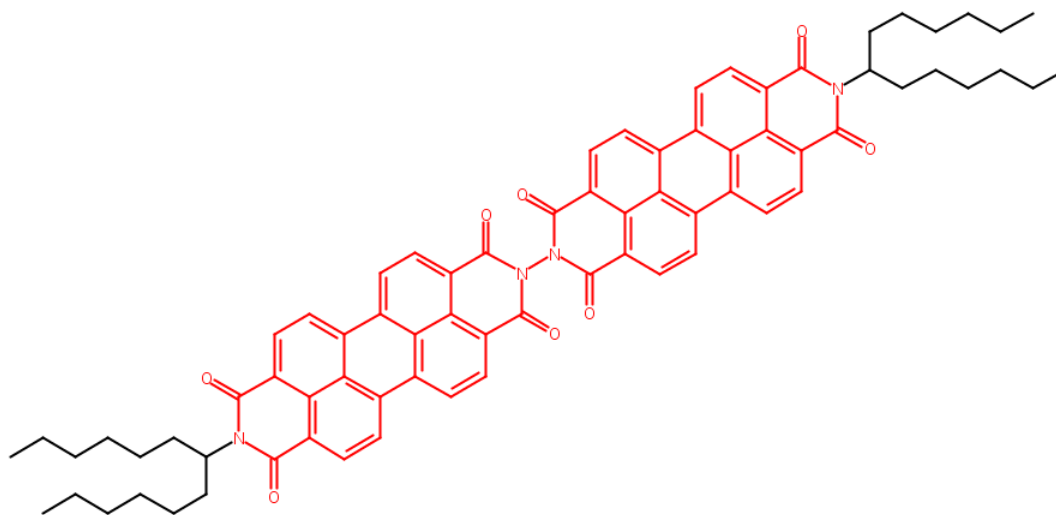
1143.37

Density (Predicted)

Value: 1.340±0.06 g/cm³ | Condition: Temp: 20 °C Press: 760 Torr

pKa (Predicted)

Value: -2.43±0.20 | Condition: Most Basic Temp: 25 °C



P-PDI / H-di-PDI Family

CAS Registry Number: 1706546-04-4

C₇₀ H₆₂ N₄ O₈

[2,2'(1*H*,1'*H*)-Bianthra[2,1,9-*def*:6,5,10-*d'e'f'*]diisoquinoline]-1,1',3,3',8,8',10,10'(9*H*,9'*H*)-octone, 9,9'-bis(1-pentylhexyl)-

Molecular Weight

1087.26

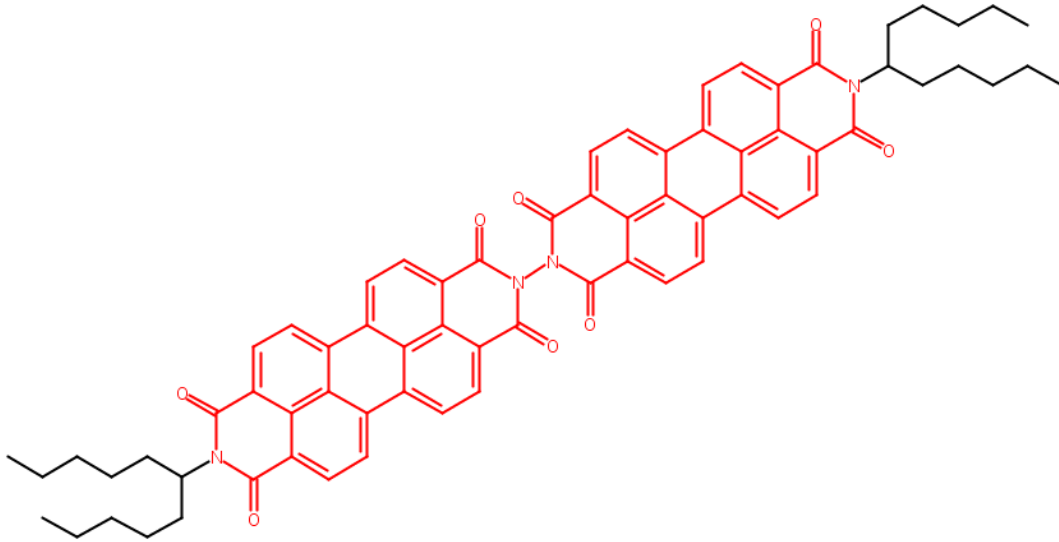
Density (Predicted)

Value: 1.381±0.06 g/cm³ | Condition: Temp: 20 °C Press: 760 Torr

pKa (Predicted)

Value: -2.43±0.20 | Condition: Most Basic Temp: 25 °C

Other Names: 9,9'-Bis(1-pentylhexyl)[2,2'(1*H*,1'*H*)-bianthra[2,1,9-*def*:6,5,10-*d'e'f'*]diisoquinoline]-1,1',3,3',8,8',10,10'(9*H*,9'*H*)-octone



COA Available upon request

P-PDI / H-di-PDI Family

CAS Registry Number: 207393-86-0

C₆₆ H₅₄ N₄ O₈

[2,2'-(1*H*,1'*H*)-Bianthra[2,1,9-*def*:6,5,10-*d'e'f'*]diisoquinoline]-1,1',3,3',8,8',10,10'(9*H*,9'*H*)-octone, 9,9'-bis(1-butylpentyl)- (9CI)

Molecular Weight

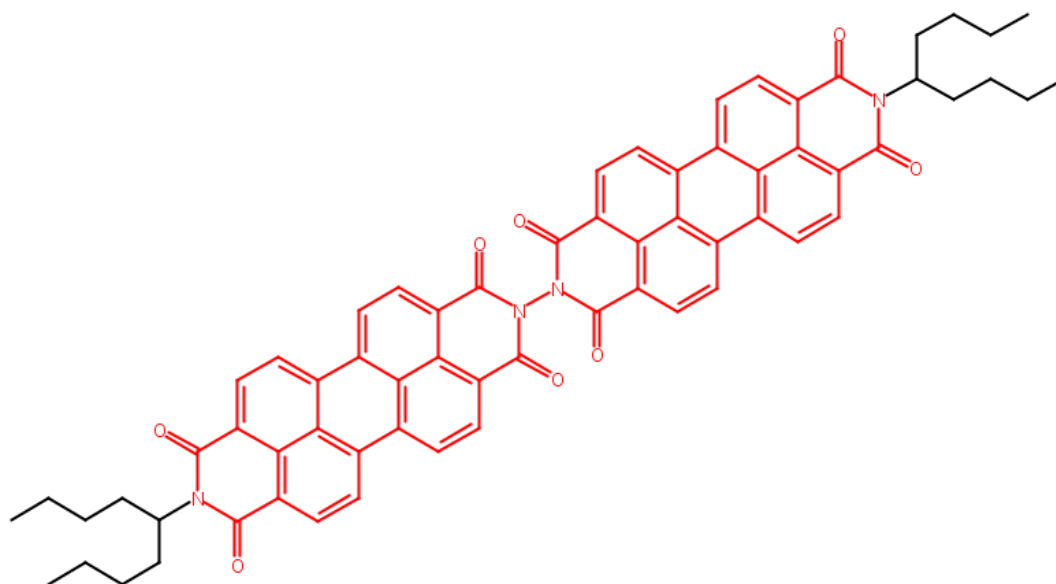
1031.16

Density (Predicted)

Value: 1.430±0.06 g/cm³ | Condition: Temp: 20 °C Press: 760 Torr

pKa (Predicted)

Value: -2.47±0.20 | Condition: Most Basic Temp: 25 °C



P-PDI / H-di-PDI Family

CAS Registry Number: 1416472-39-3

C₇₆ H₇₄ N₄ O₈

[2,2'(1*H*,1'*H*)-Bianthra[2,1,9-*def*:6,5,10-*d'e'f'*]diisoquinoline]-1,1',3,3',8,8',10,10'(9*H*,9'*H*)-octone, 9,9'-bis(1-hexyloctyl)-

Molecular Weight

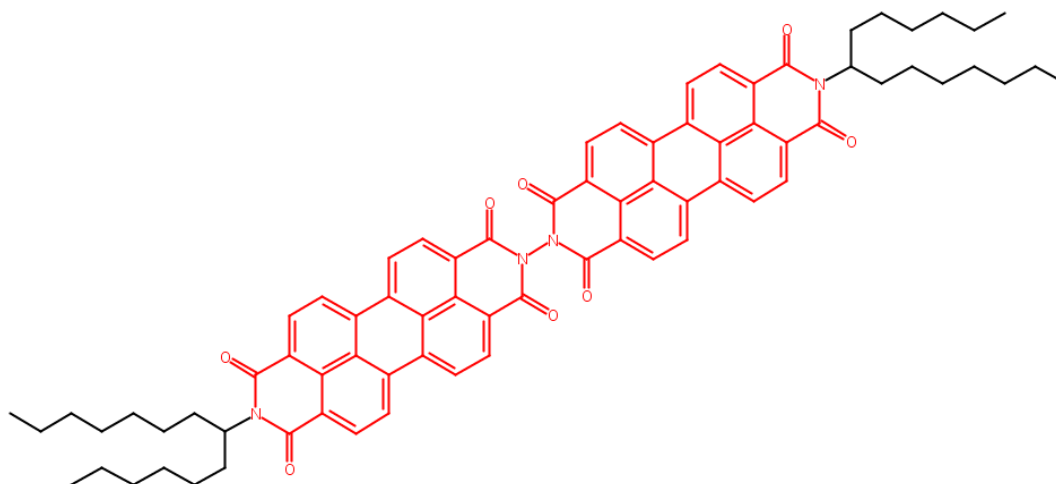
1171.42

Density (Predicted)

Value: 1.322±0.06 g/cm³ | Condition: Temp: 20 °C Press: 760 Torr

pKa (Predicted)

Value: -2.45±0.20 | Condition: Most Basic Temp: 25 °C



P-PDI / H-di-PDI Family

CAS Registry Number: 207393-88-2

$C_{78}H_{78}N_4O_8$

[2,2'(1*H*,1'*H*)-Bianthra[2,1,9-*def*:6,5,10-*d'e'f'*]diisoquinoline]-1,1',3,3',8,8',10,10'(9*H*,9'*H*)-octone, 9,9'-bis(1-heptyloctyl)- (9CI)

Molecular Weight

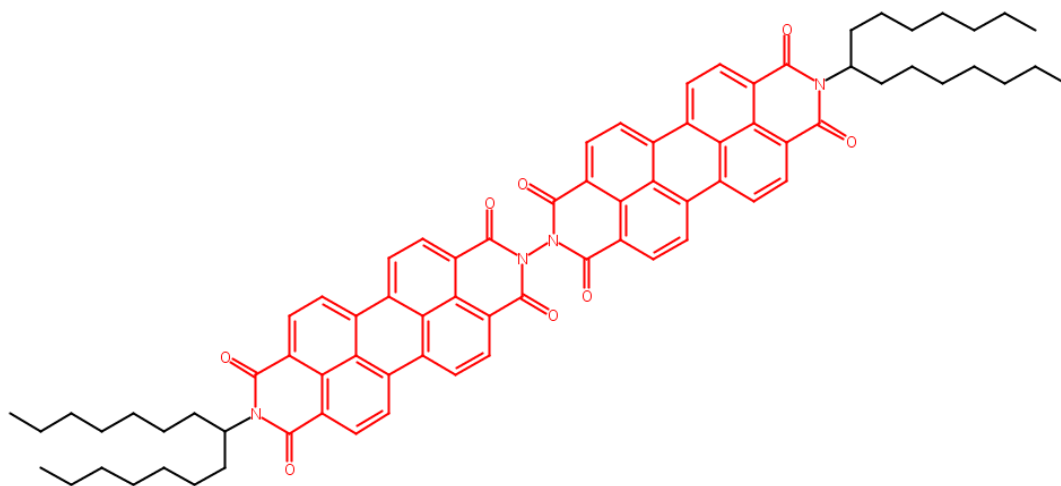
1199.48

Density (Predicted)

Value: 1.305±0.06 g/cm³ | Condition: Temp: 20 °C Press: 760 Torr

pKa (Predicted)

Value: -2.46±0.20 | Condition: Most Basic Temp: 25 °C



P-PDI / H-di-PDI Family

CAS Registry Number: 207393-92-8

C₈₆ H₈₄ N₄ O₈

[2,2'(1*H*,1'*H*)-Bianthra[2,1,9-*def*:6,5,10-*d'e'f'*]diisoquinoline]-1,1',3,3',8,8',10,10'(9*H*,9'*H*)-octone, 9,9'-bis(1-nonyldecyl)- (9CI)

Molecular Weight

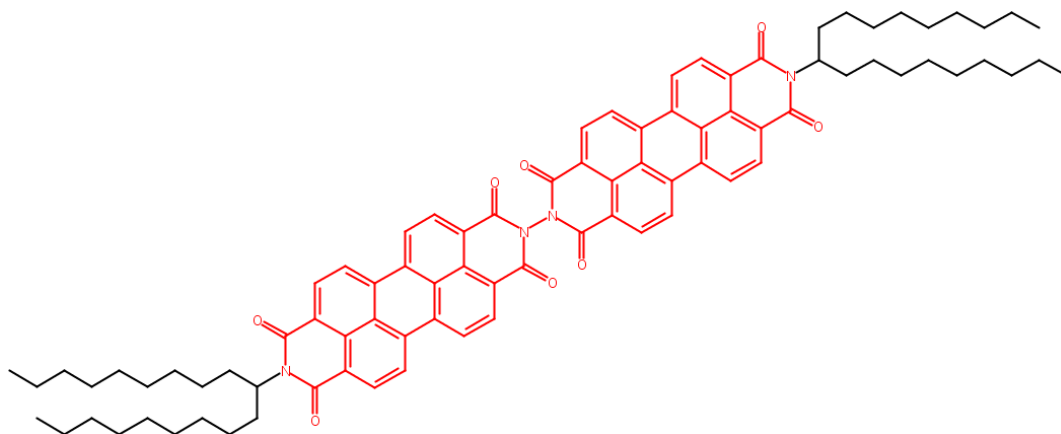
1311.69

Density (Predicted)

Value: 1.248±0.06 g/cm³ | Condition: Temp: 20 °C Press: 760 Torr

pKa (Predicted)

Value: -2.48±0.20 | Condition: Most Basic Temp: 25 °C



Holman, Michael W.; Journal of the American Chemical Society 2004, V126(49), P16126-16133

P-PDI / H-di-PDI Family

CAS Registry Number: 207393-90-6

$C_{82}H_{86}N_4O_8$

[2,2'(1*H*,1'*H*)-Bianthra[2,1,9-*def*:6,5,10-*d'e'f'*]diisoquinoline]-1,1',3,3',8,8',10,10'(9*H*,9'*H*)-octone, 9,9'-bis(1-octylonyl)- (9CI)

Molecular Weight

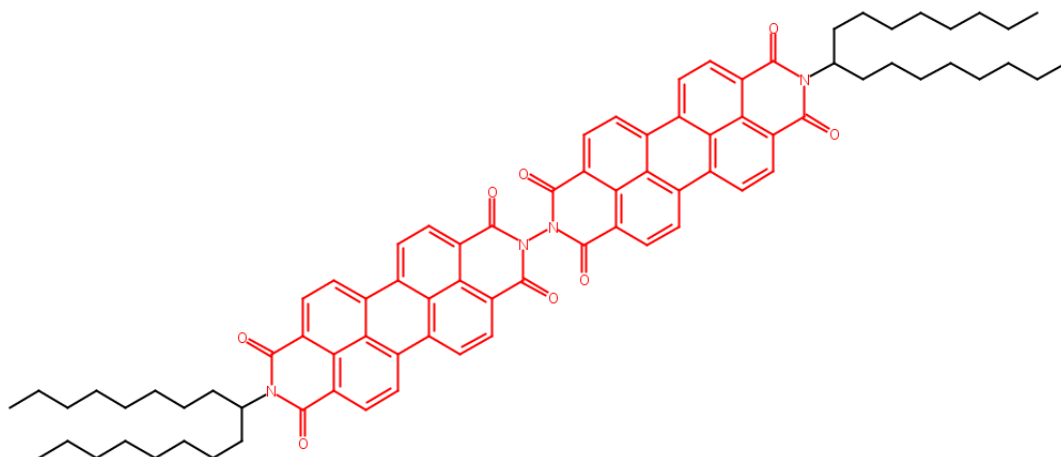
1255.58

Density (Predicted)

Value: 1.274±0.06 g/cm³ | Condition: Temp: 20 °C Press: 760 Torr

pKa (Predicted)

Value: -2.47±0.20 | Condition: Most Basic Temp: 25 °C



P-PDI / H-di-PDI Family

CAS Registry Number: 2407958-58-9

C₆₄H₃₄N₄O₈

INDEX NAME NOT YET ASSIGNED

Molecular Weight

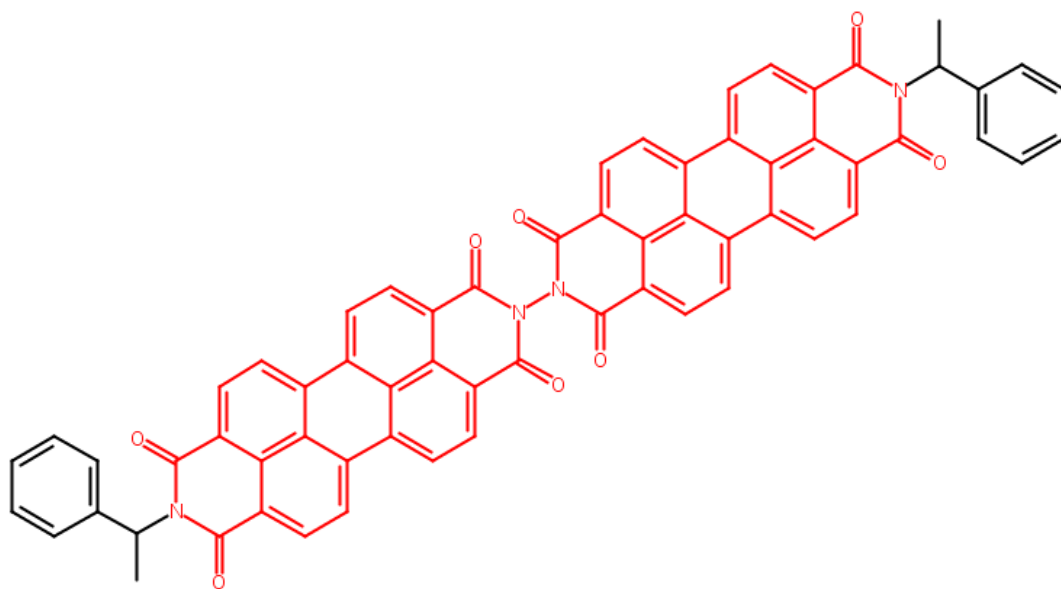
986.98

Density (Predicted)

Value: 1.619±0.06 g/cm³ | Condition: Temp: 20 °C Press: 760 Torr

pKa (Predicted)

Value: -2.58±0.20 | Condition: Most Basic Temp: 25 °C



P-PDI / H-di-PDI Family

CAS Registry Number: 207393-96-2

$C_{98}H_{78}N_6O_{12}$

[2,2'(1*H*,1'*H*):9',2''(8'*H*,1''*H*)-Teranthra[2,1,9-*def*:6,5,10-*d'ef'*]diisoquinoline]-1,1',1'',3,3',3'',8,8',8'',10,10',10''(9*H*,9'*H*)-dodecane, 9,9''-bis(1-hexylheptyl)- (9CI)

Molecular Weight

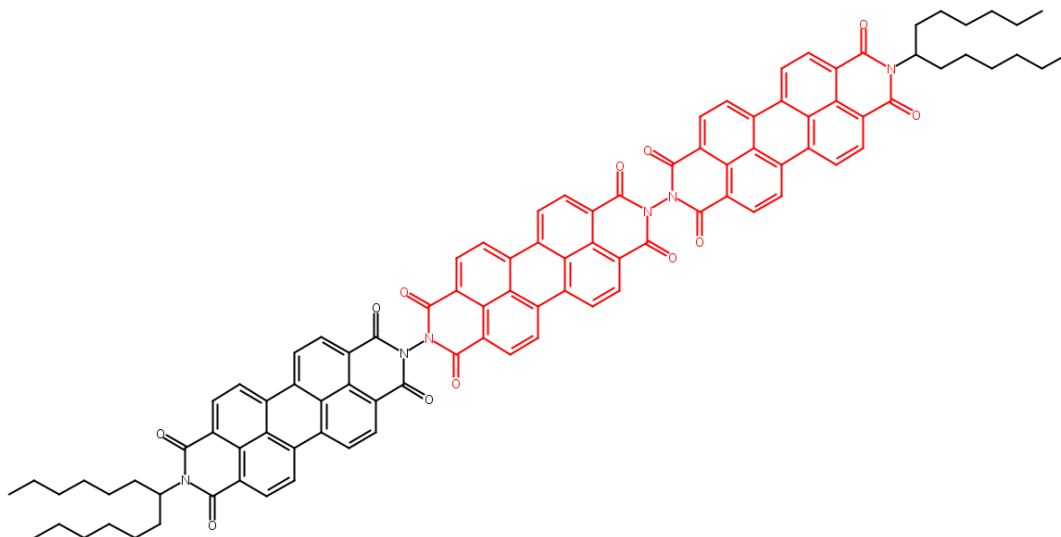
1531.70

Density (Predicted)

Value: 1.460±0.06 g/cm³ | Condition: Temp: 20 °C Press: 760 Torr

pKa (Predicted)

Value: -2.43±0.20 | Condition: Most Basic Temp: 25 °C



P-PDI / H-di-PDI Family

CAS Registry Number: 207393-98-4

C₁₀₂ H₅₆ N₄ O₁₂

[2,2'(1*H*,1'*H*):9',2''(8'*H*,1''*H*)-Teranthra[2,1,9-*def*:6,5,10-*d'ef'*]diisoquinoline]-1,1',1'',3,3',3'',8,8',8'',10,10',10''(9*H*,9'*H*)-dodecane, 9,9''-bis(1-heptyloctyl)- (9CI)

Molecular Weight

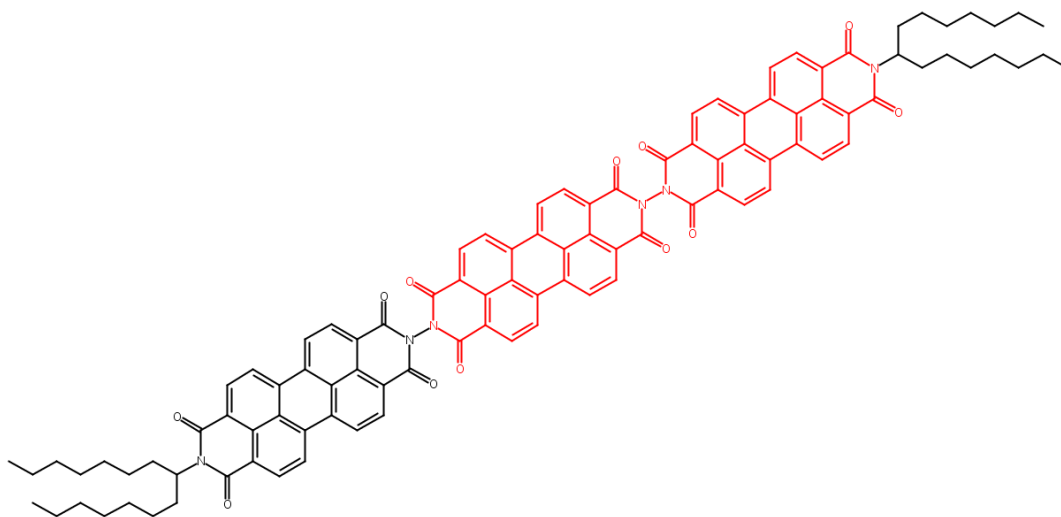
1587.81

Density (Predicted)

Value: 1.424±0.06 g/cm³ | Condition: Temp: 20 °C Press: 760 Torr

pKa (Predicted)

Value: -2.46±0.20 | Condition: Most Basic Temp: 25 °C



P-PDI / H-di-PDI Family

CAS Registry Number: 207394-00-1

C₁₁₀ H₁₀₂ N₆ O₁₂

[2,2'(1*H*,1'*H*):9',2''(8'*H*,1''*H*)-Teranthra[2,1,9-*def*:6,5,10-*d'ef'*]diisoquinoline]-1,1',1'',3,3',3'',8,8',8'',10,10',10''(9*H*,9'*H*)-dodecane, 9,9''-bis(1-nonyldecyl)- (9CI)

Molecular Weight

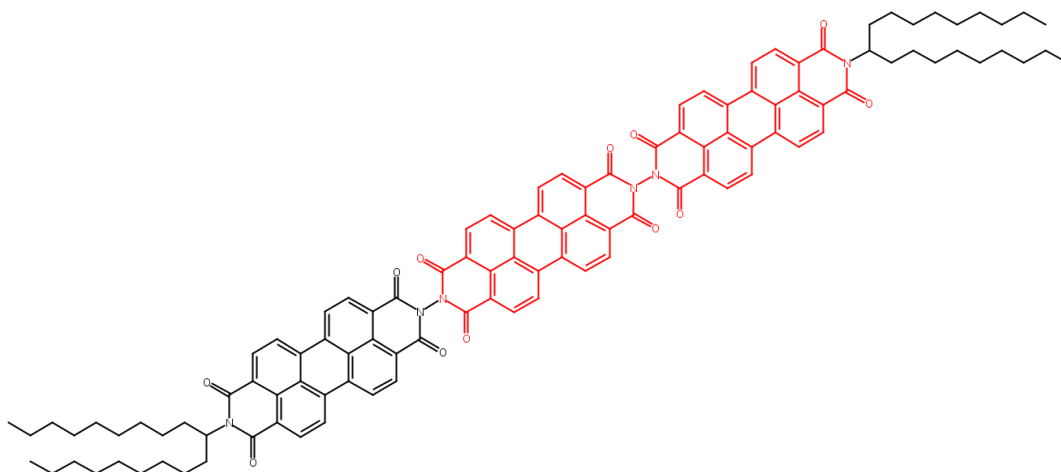
1700.02

Density (Predicted)

Value: 1.363±0.06 g/cm³ | Condition: Temp: 20 °C Press: 760 Torr

pKa (Predicted)

Value: -2.47±0.20 | Condition: Most Basic Temp: 25 °C



P-PDI / H-di-PDI Family

CAS Registry Number: 207393-94-0

$C_{70}H_{46}N_4O_8$

[2,2'(1*H*,1'*H*)-Bianthra[2,1,9-*def*:6,5,10-*d'e'f'*]diisoquinoline]-1,1',3,3',8,8',10,10'(9*H*,9'*H*)-octone, 9,9'-bis[5-(1,1-dimethylethyl)-2-methylphenyl]- (9CI)

Molecular Weight

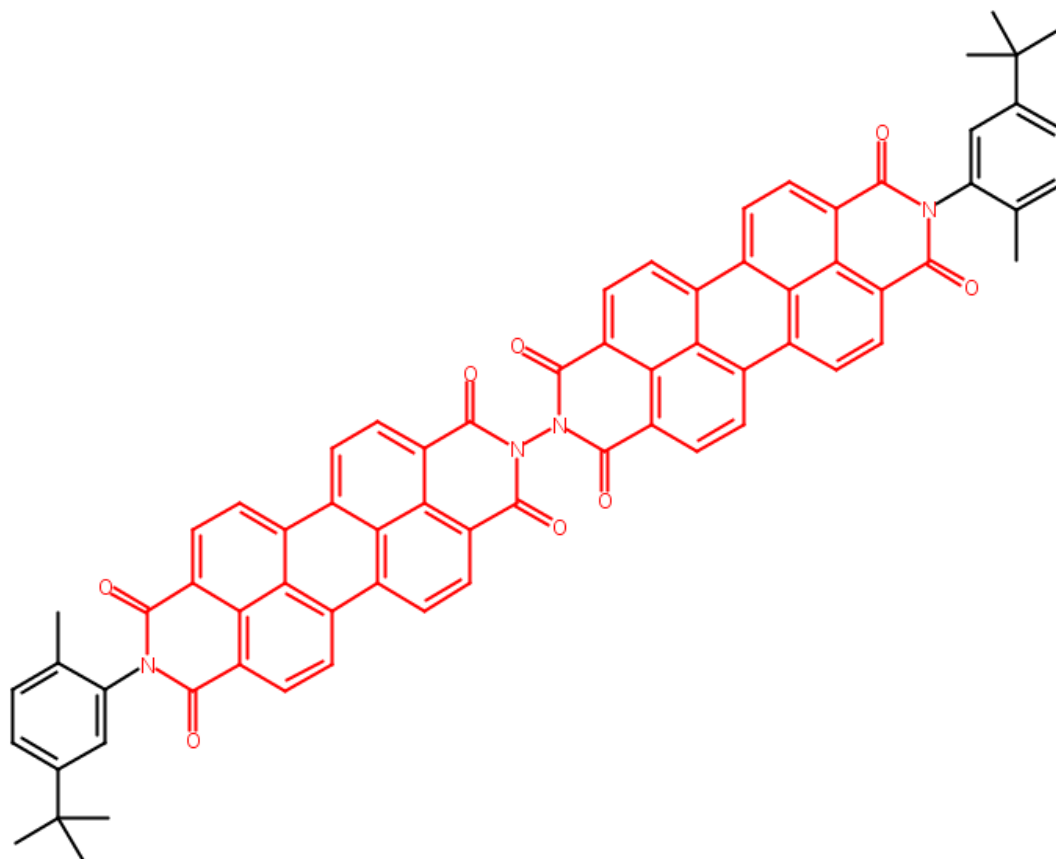
1071.14

Density (Predicted)

Value: 1.502±0.06 g/cm³ | Condition: Temp: 20 °C Press: 760 Torr

pKa (Predicted)

Value: 3.57±0.20 | Condition: Most Basic Temp: 25 °C



P-PDI / H-di-PDI Family

CAS Registry Number: 451445-15-1

C₇₆ H₆₆ N₈ O₈

[2,2'(1*H*,1'*H*)-Bianthra[2,1,9-*def*:6,5,10-*d'e'f'*]diisoquinoline]-1,1',3,3',8,8',10,10'(9*H*,9'*H*)-octone,
9,9'-dicyclohexyl-5,5',12,12'-tetra-1-pyrrolidinyl- (9CI)

Molecular Weight

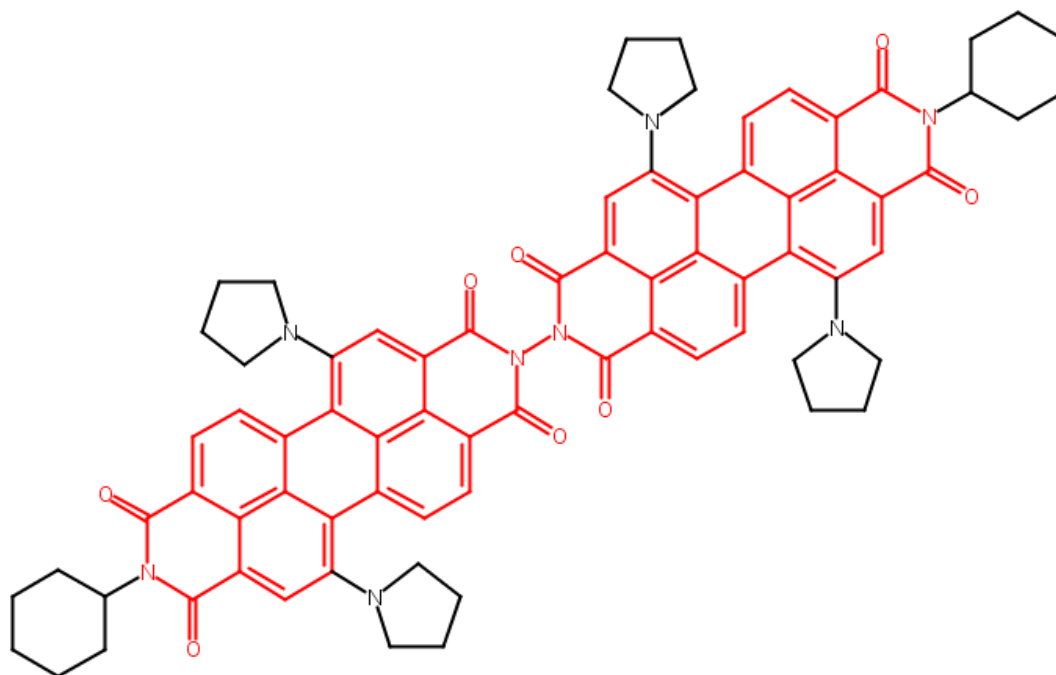
1219.39

Density (Predicted)

Value: 1.530±0.06 g/cm³ | Condition: Temp: 20 °C Press: 760 Torr

pKa (Predicted)

Value: 4.95±0.20 | Condition: Most Basic Temp: 25 °C



P-PDI / H-di-PDI Family

CAS Registry Number: 220499-09-2

C₇₆ H₆₆ N₄ O₈

[2,2'(1*H*,1'*H*)-Bianthra[2,1,9-*def*:6,5,10-*d'e'f'*]diisoquinoline]-1,1',3,3',8,8',10,10'(9*H*,9'*H*)-octone,
9-[5-(1,1-dimethylethyl)-2-methylphenyl]-9'-(1-octylonyl)- (9CI)

Molecular Weight

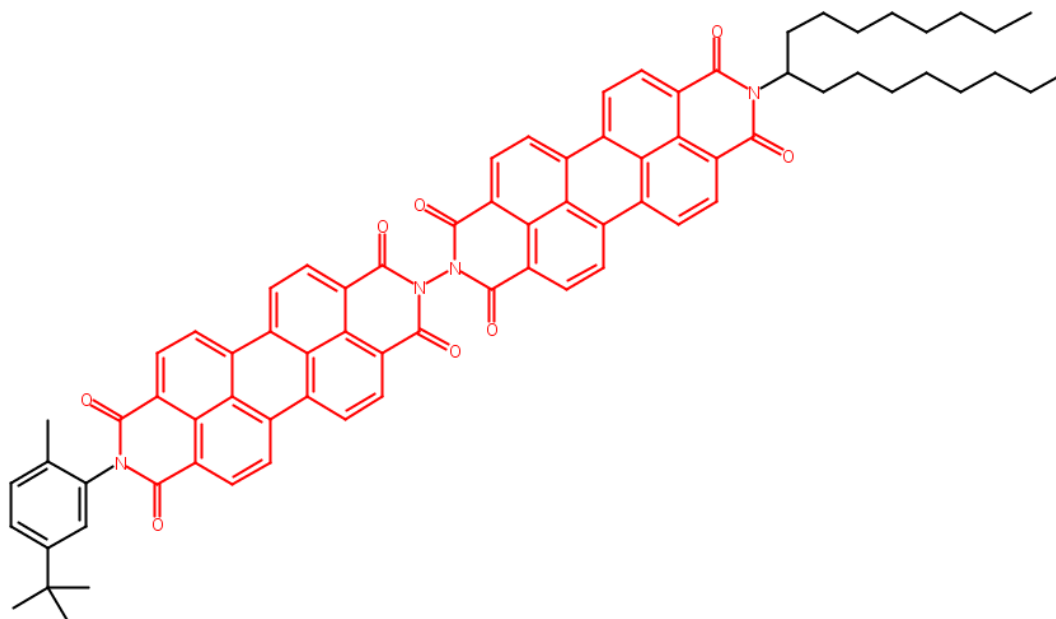
1163.36

Density (Predicted)

Value: 1.370±0.06 g/cm³ | Condition: Temp: 20 °C Press: 760 Torr

pKa (Predicted)

Value: 3.26±0.20 | Condition: Most Basic Temp: 25 °C



P-PDI / H-di-PDI Family

CAS Registry Number: 1161933-77-2

C₁₂₈ H₁₀₈ N₆ O₁₆

[2,2'(1*H*,1'*H*)-Bianthra[2,1,9-*def*:6,5,10-*d'e'f'*]diisoquinoline]-1,1',3,3',8,8',10,10'(9*H*,9'*H*)-octone,
5,5',12,12'-tetrakis[3,5-bis(1,1-dimethylethyl)phenoxy]-9,9'-bis(1,3-dioxo-1*H*-benz[*de*]isoquinolin-2(3*H*)-yl)-

Molecular Weight

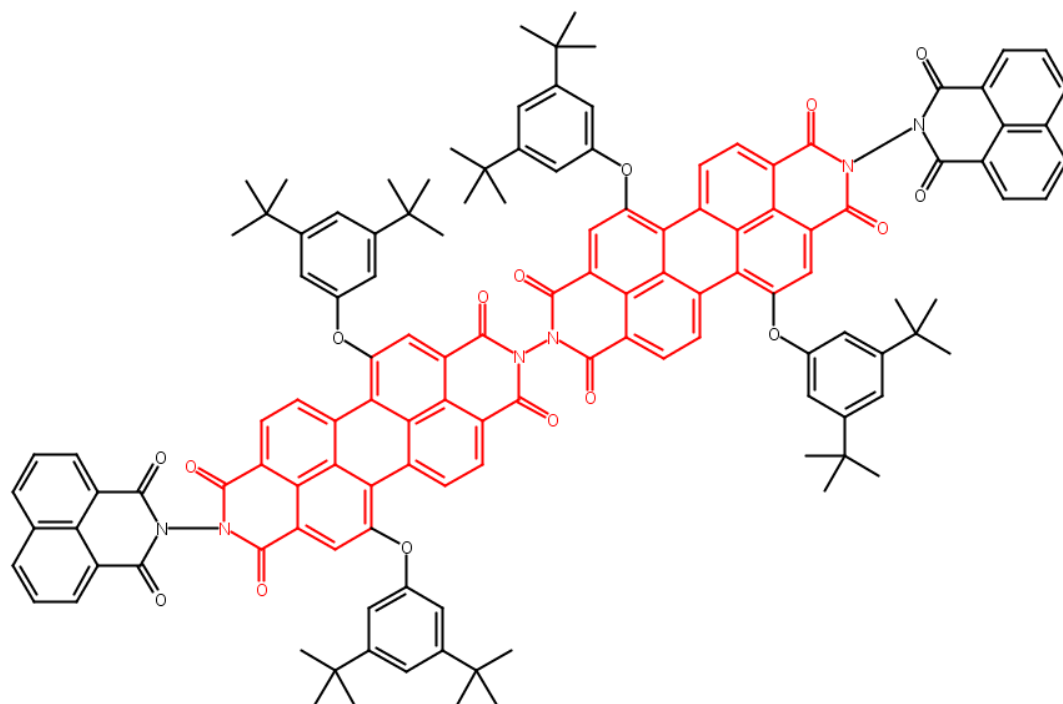
1986.26

Density (Predicted)

Value: 1.365±0.06 g/cm³ | Condition: Temp: 20 °C Press: 760 Torr

pKa (Predicted)

Value: -3.21±0.20 | Condition: Most Basic Temp: 25 °C



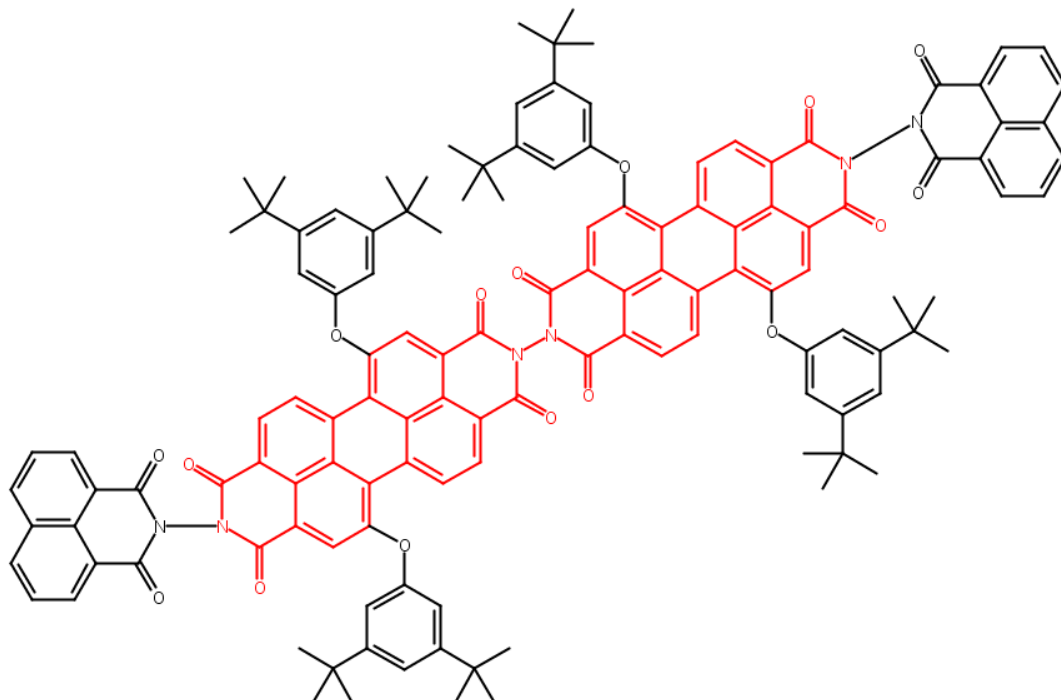
Wilson, Thea M.; Journal of the American Chemical Society 2009, V131(25), P8952-8957

P-PDI / H-di-PDI Family

CAS Registry Number: 1161933-94-3

$C_{128} H_{108} N_6 O_{16}$

[2,2'-(1*H*,1'*H*)-Bianthra[2,1,9-*def*:6,5,10-*d'e'f'*]diisoquinoline]-1,1',3,3',8,8',10,10'-(9*H*,9'*H*)-octone,
5,5',12,12'-tetrakis[3,5-bis(1,1-dimethylethyl)phenoxy]-9,9'-bis(1,3-dioxo-1*H*-benz[*de*]isoquinolin-2(3*H*)-yl)-, radical ion(1-)
Radical Ion



P-PDI / H-di-PDI Family

CAS Registry Number: 1161933-80-7

C₁₈₀ H₁₅₆ N₈ O₂₂

[2,2'(1*H*,9'*H*):9,2''(1''*H*)-Teranthra[2,1,9-*def*:6,5,10-*d'ef'*]diisoquinoline]-1,1',1'',3,3',3'',8,8',8'',10,10',10''(9*H*,9'*H*)-dodecane, 5,5',5'',12,12',12''-hexakis[3,5-bis(1,1-dimethylethyl)phenoxy]-9,9''-bis(1,3-dioxo-1*H*-benz[*de*]isoquinolin-2(3*H*)-yl)-

Molecular Weight

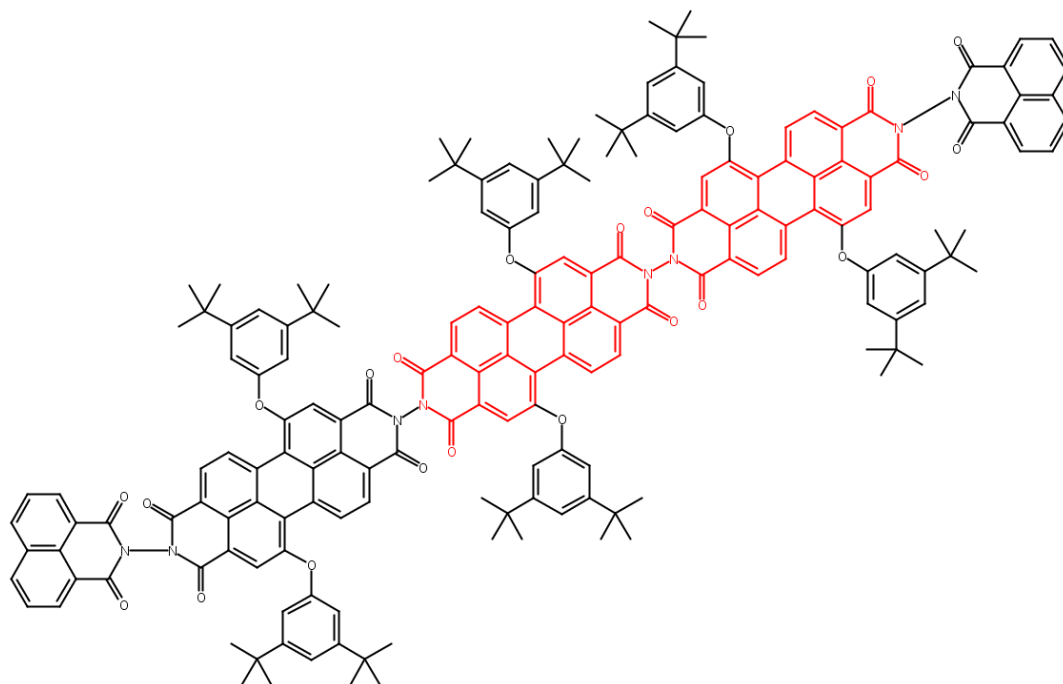
2783.21

Density (Predicted)

Value: 1.351±0.06 g/cm³ | Condition: Temp: 20 °C Press: 760 Torr

pKa (Predicted)

Value: -3.18±0.20 | Condition: Most Basic Temp: 25 °C



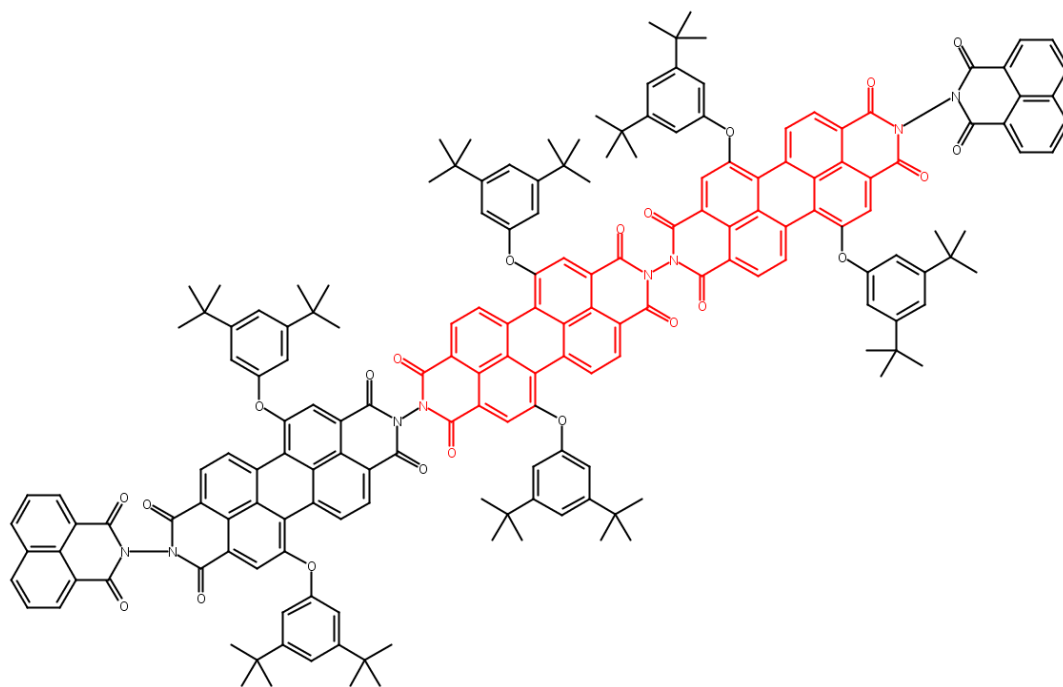
Wilson, Thea M.; Journal of the American Chemical Society 2009, V131(25), P8952-8957

P-PDI / H-di-PDI Family

CAS Registry Number: 1161933-96-5

C₁₈₀ **H**₁₅₆ **N**₈ **O**₂₂

[2,2'(1*H*,9'*H*):9',2''(1''*H*)-Terantra[2,1,9-*def*:6,5,10-*d'e'f'*]diisoquinoline]-1,1',1'',3,3',3'',8,8',8'',10,10',10''(9*H*,9''*H*)-dodecane, 5,5',5'',12,12',12''-hexakis[3,5-bis(1,1-dimethylethyl)phenoxy]-9,9''-bis(1,3-dioxo-1*H*-benz[*de*]isoquinolin-2(3*H*)-yl)-, radical ion(1-)
Radical Ion



P-PDI / H-di-PDI Family

CAS Registry Number: 2377872-07-4

C₁₄₄ H₁₄₆ N₄ O₁₆

INDEX NAME NOT YET ASSIGNED

Molecular Weight

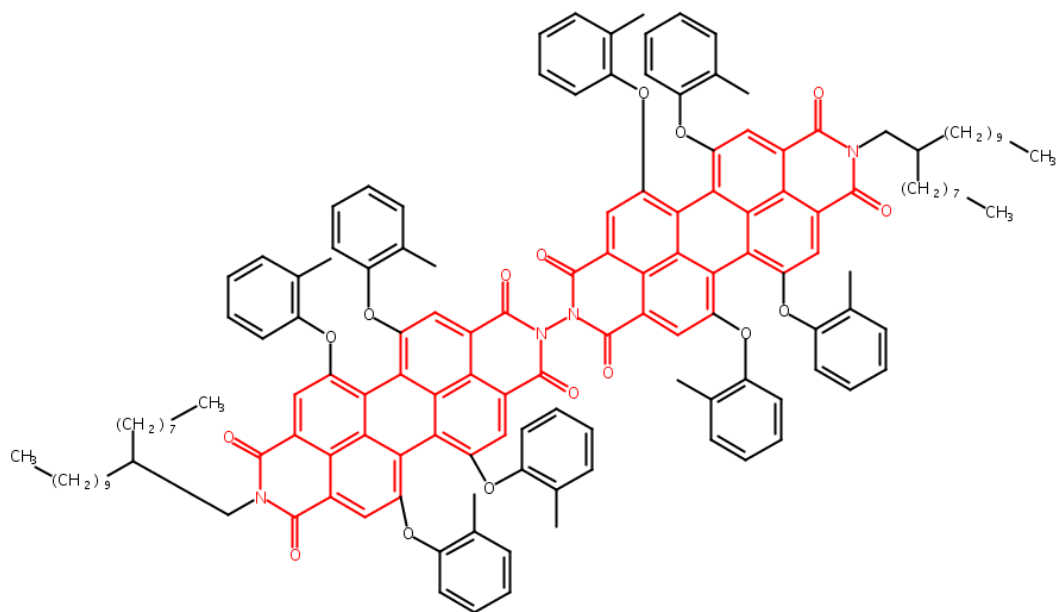
2188.72

Density (Predicted)

Value: 1.227±0.06 g/cm³ | Condition: Temp: 20 °C Press: 760 Torr

pKa (Predicted)

Value: -2.49±0.20 | Condition: Most Basic Temp: 25 °C



P-PDI / H-di-PDI Family

CAS Registry Number: 945035-14-3

$C_{198} H_{182} N_6 O_{24}$

[2,2'(1*H*,9'*H*):9',2''(1''*H*)-Teranthra[2,1,9-*def*:6,5,10-*d'ef'*]diisoquinoline]-1,1',1'',3,3',3'',8,8',8'',10,10',10''(9*H*,9'*H*)-dodecone, 5,5',5'',6,6',6'',12,12',12'',13,13',13''-dodecakis[4-(1,1-dimethylethyl)phenoxy]-9,9''-dipropyl-

Molecular Weight

3029.59

Density (Predicted)

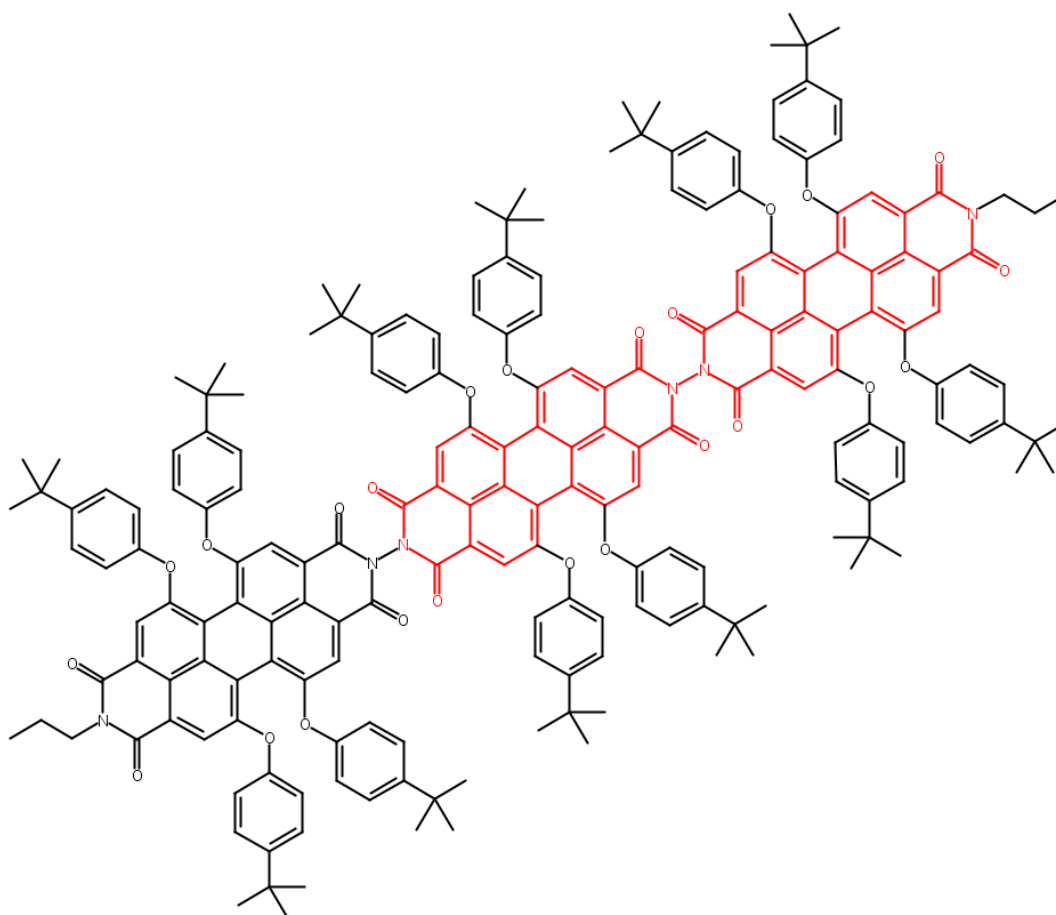
Value: 1.278±0.06 g/cm³ | Condition: Temp: 20 °C Press: 760 Torr

pKa (Predicted)

Value: -2.74±0.20 | Condition: Most Basic Temp: 25 °C

Other Names:

5,5',5'',6,6',6'',12,12',12'',13,13',13''-Dodecakis[4-(1,1-dimethylethyl)phenoxy]-9,9''-dipropyl[2,2'(1*H*,9'*H*):9',2''(1''*H*)-teranthra[2,1,9-*def*:6,5,10-*d'ef'*]diisoquinoline]-1,1',1'',3,3',3'',8,8',8'',10,10',10''(9*H*,9'*H*)-dodecone



P-PDI / H-di-PDI Family

CAS Registry Number: 2377873-09-9

C₁₀₄ H₈₀ N₄ O₁₂

INDEX NAME NOT YET ASSIGNED

Molecular Weight

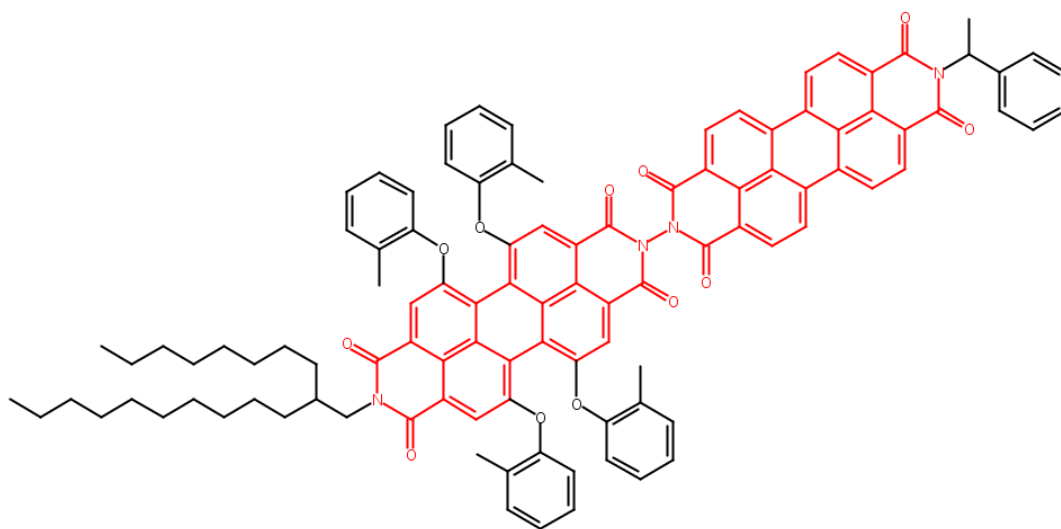
1587.85

Density (Predicted)

Value: 1.327±0.06 g/cm³ | Condition: Temp: 20 °C Press: 760 Torr

pKa (Predicted)

Value: -2.77±0.20 | Condition: Most Basic Temp: 25 °C



P-PDI / H-di-PDI Family

CAS Registry Number: 1679388-12-5

C₁₂₆ H₁₁₈ N₆ O₁₄

INDEX NAME NOT YET ASSIGNED

Molecular Weight

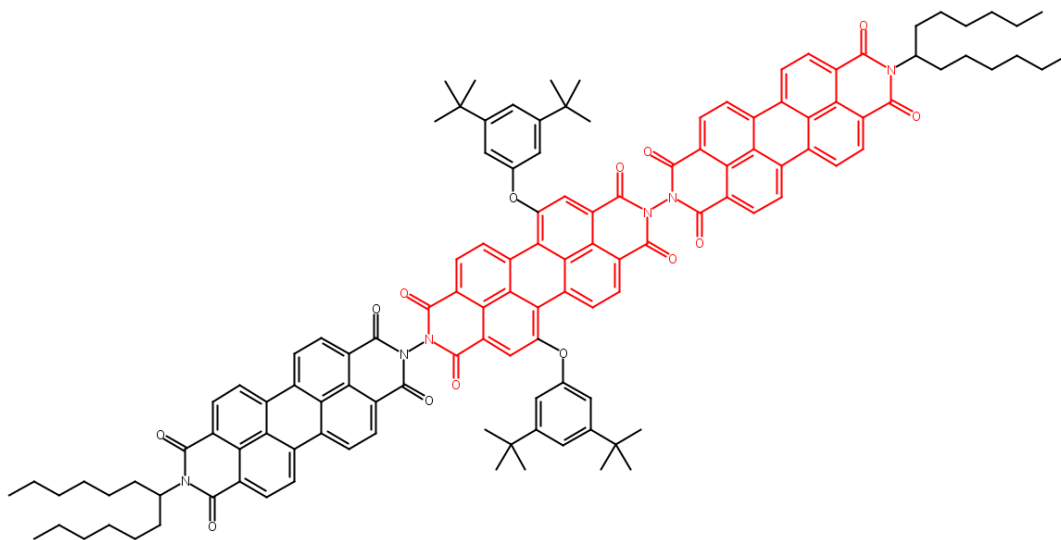
1940.32

Density (Predicted)

Value: 1.331±0.06 g/cm³ | Condition: Temp: 20 °C Press: 760 Torr

pKa (Predicted)

Value: -2.43±0.20 | Condition: Most Basic Temp: 25 °C



P-PDI / H-di-PDI Family

CAS Registry Number: 1161933-71-6

C₁₂₈ H₃₀ N₄ O₁₂

[2,2'-(1*H*,1'*H*)-Bianthra[2,1,9-*def*:6,5,10-*d'e'f'*]diisoquinoline]-1,1',3,3',8,8',10,10'(9*H*,9'*H*)-octone,
5,5',12,12'-tetrakis[3,5-bis(1,1-dimethylethyl)phenoxy]-9,9'-bis[2,6-bis(1-methylethyl)phenyl]-

Molecular Weight

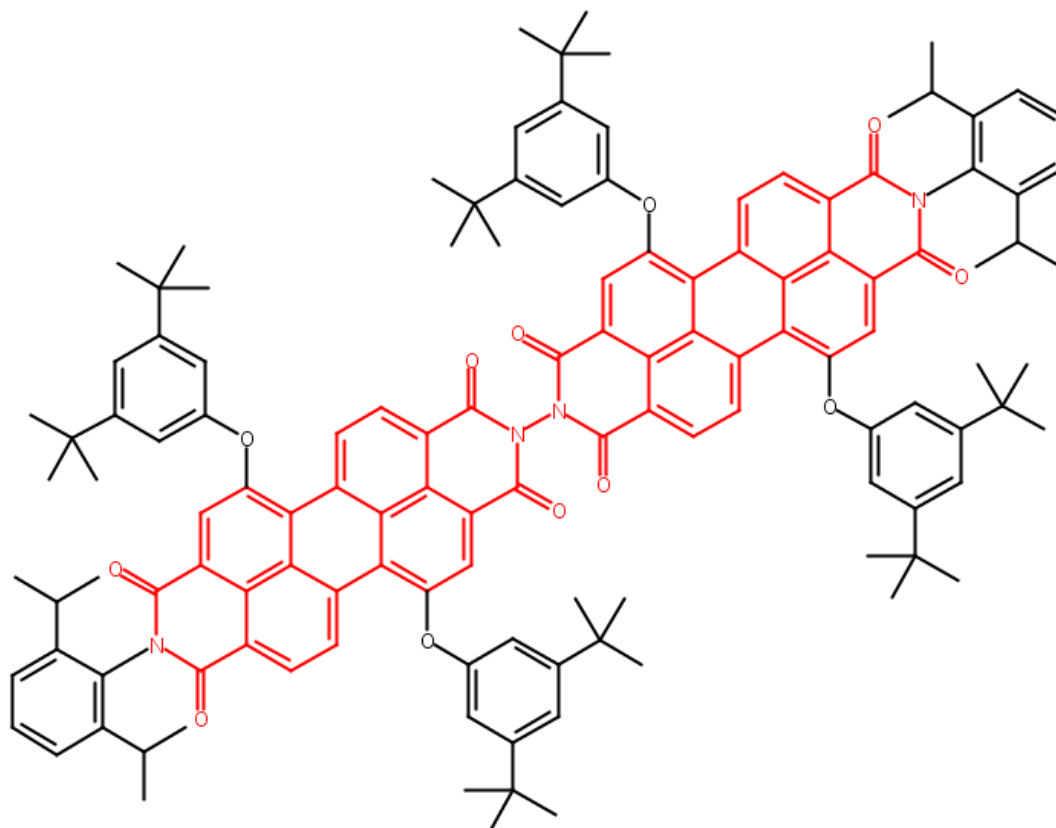
1916.42

Density (Predicted)

Value: 1.226±0.06 g/cm³ | Condition: Temp: 20 °C Press: 760 Torr

pKa (Predicted)

Value: 4.18±0.20 | Condition: Most Basic Temp: 25 °C



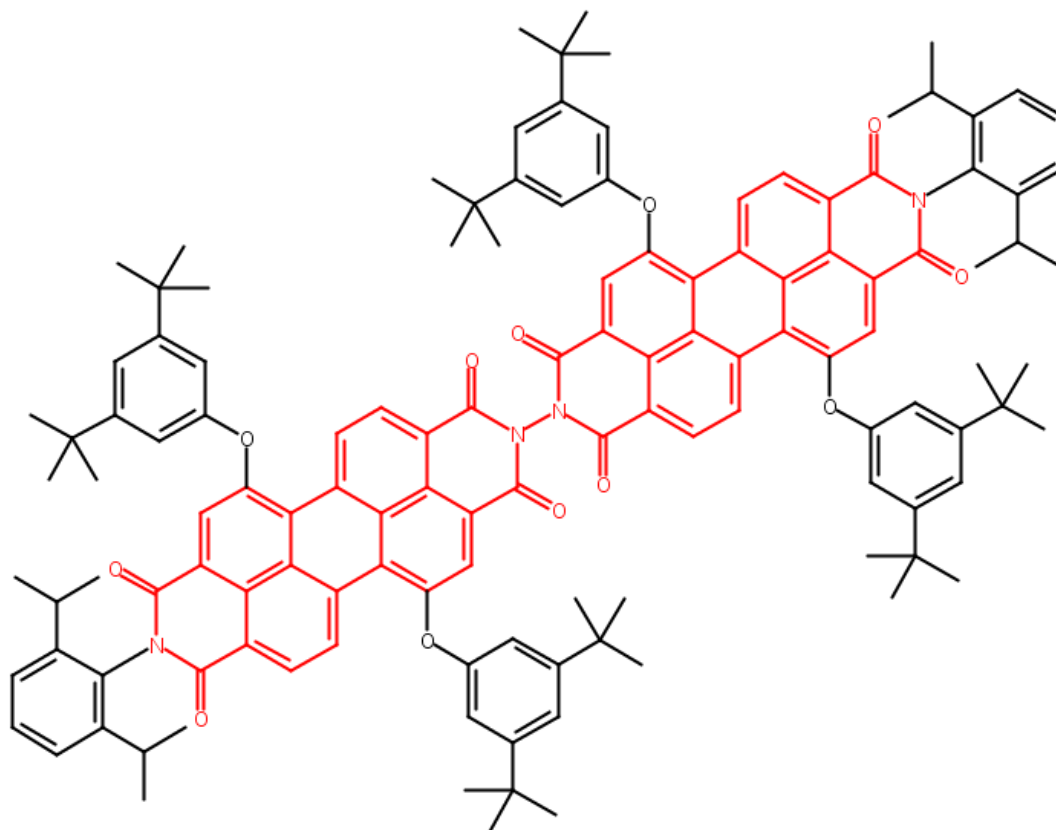
Wilson, Thea M.; Journal of the American Chemical Society 2009, V131(25), P8952-8957

P-PDI / H-di-PDI Family

CAS Registry Number: 1161933-86-3

C₁₂₈ **H**₁₃₀ **N**₄ **O**₁₂

[2,2'-(1*H*,1'*H*)-Bianthra[2,1,9-*def*:6,5,10-*d'e'*]diisoquinoline]-1,1',3,3',8,8',10,10'(9*H*,9'*H*)-octone,
5,5',12,12'-tetrakis[3,5-bis(1,1-dimethylethyl)phenoxy]-9,9'-bis[3,5-bis(1,1-dimethylethyl)phenyl]-, radical ion(1-)
Radical Ion



P-PDI / H-di-PDI Family

CAS Registry Number: 1161933-73-8

C₁₈₀ H₇₈ N₆ O₁₈

[2,2'(1*H*,9'*H*):9',2''(1''*H*)-Teranthra[2,1,9-*def*:6,5,10-*d'ef'*]diisoquinoline]-1,1',1'',3,3',3'',8,8',8'',10,10',10''(9*H*,9'*H*)-dodecane, 5,5',5'',12,12',12''-hexakis[3,5-bis(1,1-dimethylethyl)phenoxy]-9,9''-bis[2,6-bis(1-methylethyl)phenyl]-

Molecular Weight

2713.37

Density (Predicted)

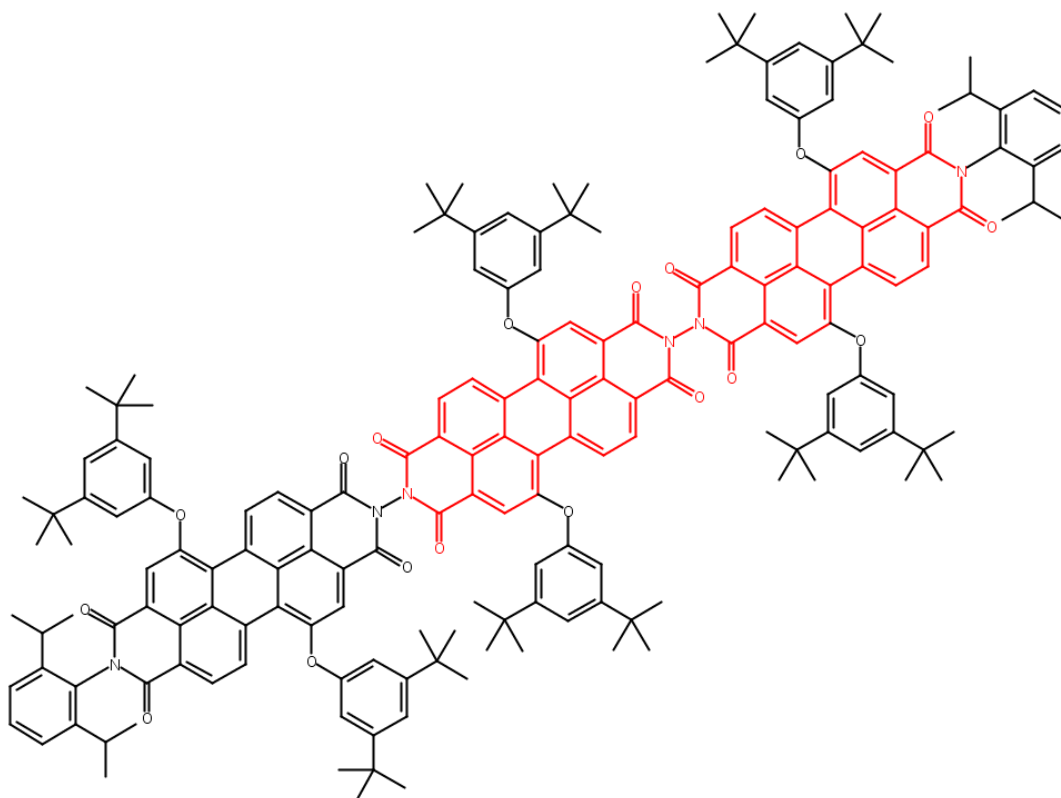
Value: 1.252±0.06 g/cm³ | Condition: Temp: 20 °C Press: 760 Torr

pKa (Predicted)

Value: 3.87±0.20 | Condition: Most Basic Temp: 25 °C

Other Names:

5,5',5'',12,12',12''-Hexakis[3,5-bis(1,1-dimethylethyl)phenoxy]-9,9''-bis[2,6-bis(1-methylethyl)phenyl][2,2'(1*H*,9'*H*):9',2''(1''*H*)-teranthra[2,1,9-*def*:6,5,10-*d'ef'*]diisoquinoline]-1,1',1'',3,3',3'',8,8',8'',10,10',10''(9*H*,9'*H*)-dodecane



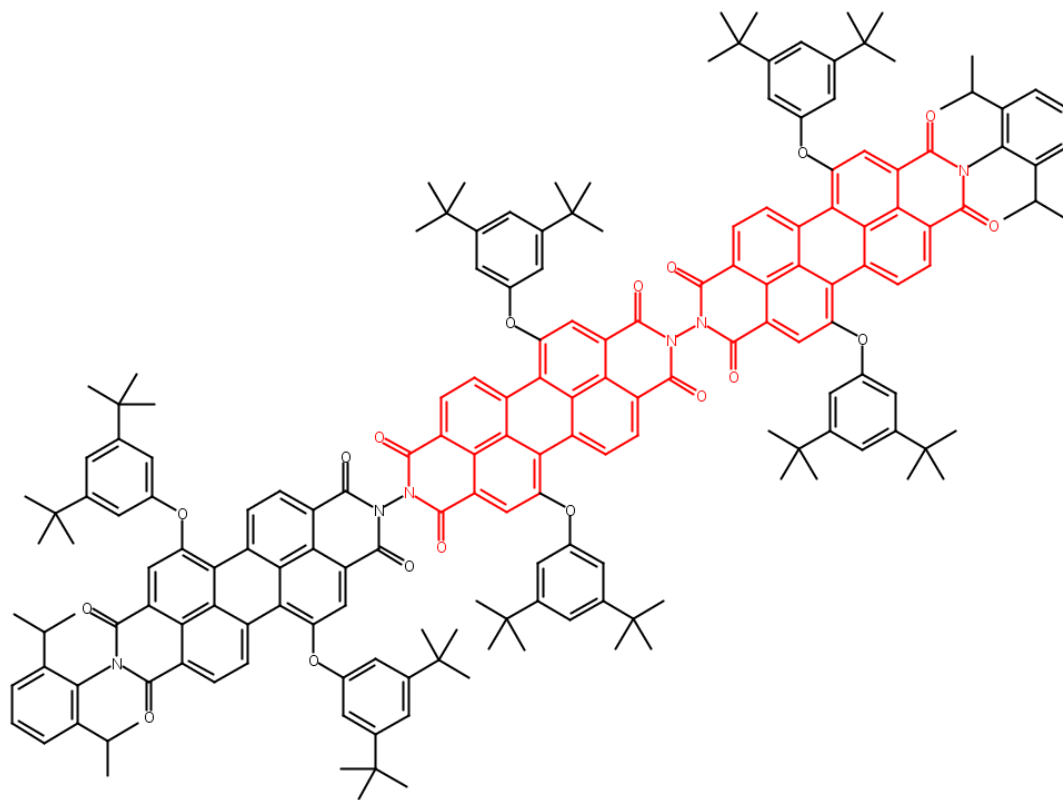
Wilson, Thea M.; Journal of the American Chemical Society 2009, V131(25), P8952-8957

P-PDI / H-di-PDI Family

CAS Registry Number: 1161933-88-5

C₁₈₀ **H**₁₇₈ **N**₆ **O**₁₈

[2,2'(1*H*,9'*H*):9',2''(1''*H*)-Terantra[2,1,9-*def*:6,5,10-*d'e'f'*]diisoquinoline]-1,1',1'',3,3',3'',8,8',8'',10,10',10''(9*H*,9'*H*)-dodecane, 5,5',5'',12,12',12''-hexakis[3,5-bis(1,1-dimethylethyl)phenoxy]-9,9''-bis[2,6-bis(1-methylethyl)phenyl]-, radical ion(1-)



P-PDI / H-di-PDI Family

CAS Registry Number: 404871-17-6

C₃₆ H₅₂ N₆ O₁₀

[2,2'-(1*H*,1'*H*)-Bianthra[2,1,9-*def*:6,5,10-*d'e'f'*]diisoquinoline]-1,1',3,3',8,8',10,10'(9*H*,9'*H*)-octone, 5,12-bis[3,5-bis(1,1-dimethylethyl)phenoxy]-9,9'-dicyclohexyl-5',12'-di-1-pyrrolidinyl- (9CI)

Molecular Weight

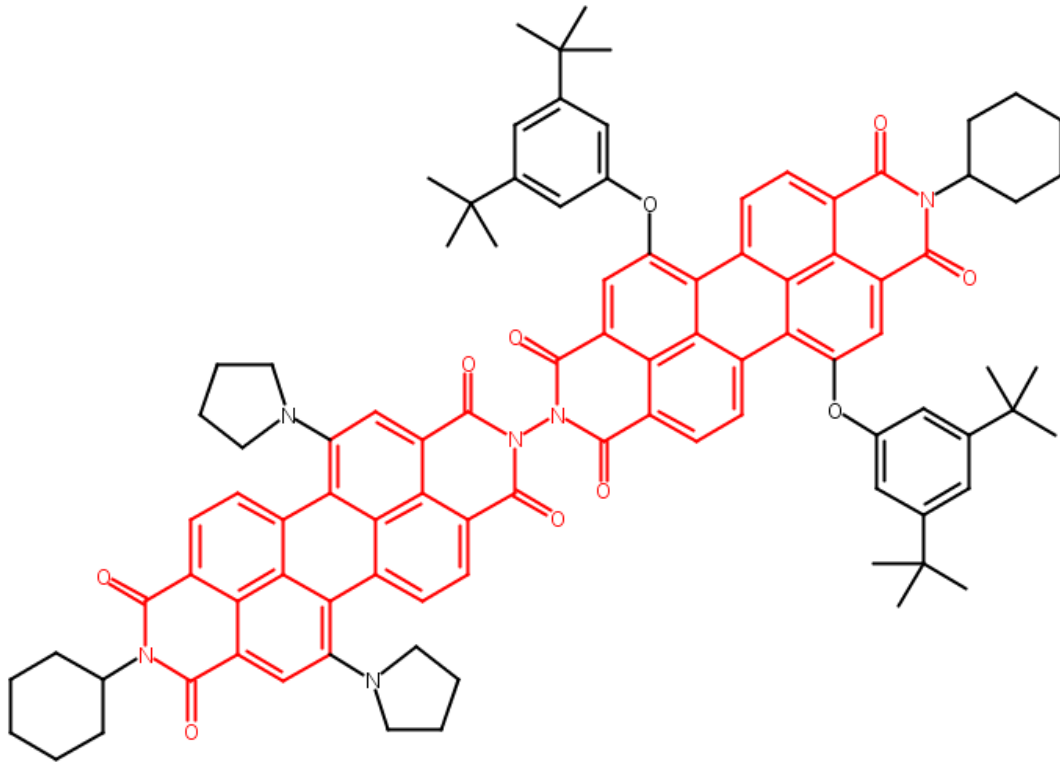
1489.79

Density (Predicted)

Value: 1.359±0.06 g/cm³ | Condition: Temp: 20 °C Press: 760 Torr

pKa (Predicted)

Value: 4.65±0.20 | Condition: Most Basic Temp: 25 °C

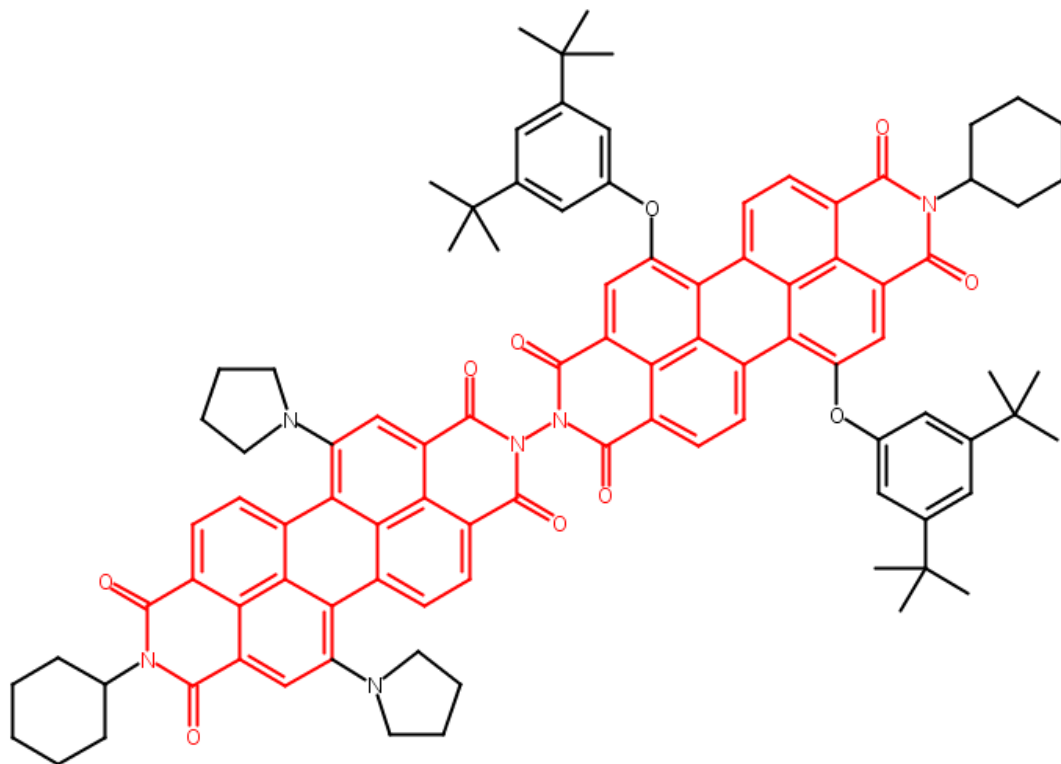


P-PDI / H-di-PDI Family

CAS Registry Number: 1161933-84-1

C₉₆ H₉₂ N₆ O₁₀

Anthra[2,1,9-*def*:6,5,10-*d'e'f'*]diisoquinoline-1,3,8,10(2*H*,9*H*)-tetrone,
2-[5,12-bis[3,5-bis(1,1-dimethylethyl)phenoxy]-9-cyclohexyl-3,8,9,10-tetrahydro-1,3,8,10-tetraoxoanthra[2,1,9-*def*:6,5,10-*d'e'f'*]diisoquinolin-2(1*H*)-yl]-9-cyclohexyl-5,12-di-1-pyrrolidinyl-, radical ion(1-)
Radical Ion



P-PDI / H-di-PDI Family

CAS Registry Number: 1207325-30-1

C₁₂₈ H₁₁₄ N₁₀ O₁₄

[2,2'(1*H*,9'*H*):9',2''(1''*H*)-Teranthra[2,1,9-*def*:6,5,10-*d'ef'*]diisoquinoline]-1,1',1'',3,3',3'',8,8',8'',10,10',10''(9*H*,9'*H*)-dodecone, 9,9''-dicyclohexyl-5',12'-bis[3,5-(1,1-dimethylethyl)phenoxy]-5,5'',12,12''-tetra-1-pyrrolidinyl-

Molecular Weight

2016.33

Density (Predicted)

Value: 1.439±0.06 g/cm³ | Condition: Temp: 20 °C Press: 760 Torr

pKa (Predicted)

Value: 4.94±0.20 | Condition: Most Basic Temp: 25 °C

