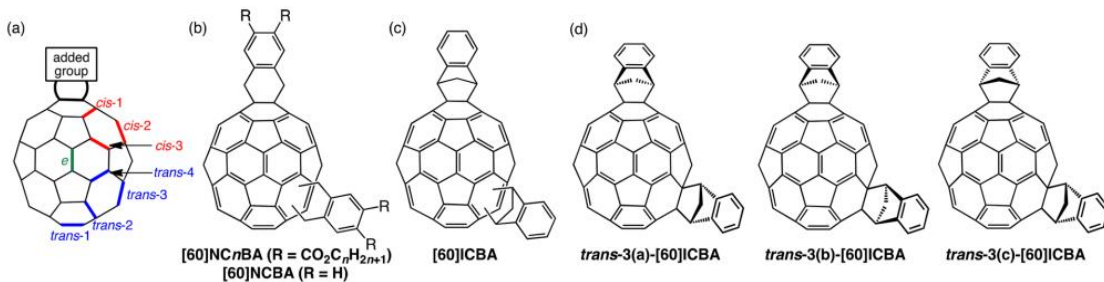
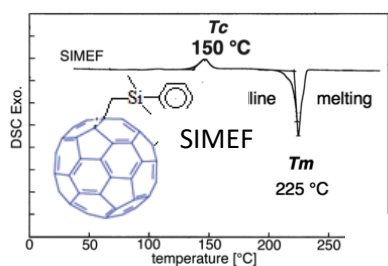
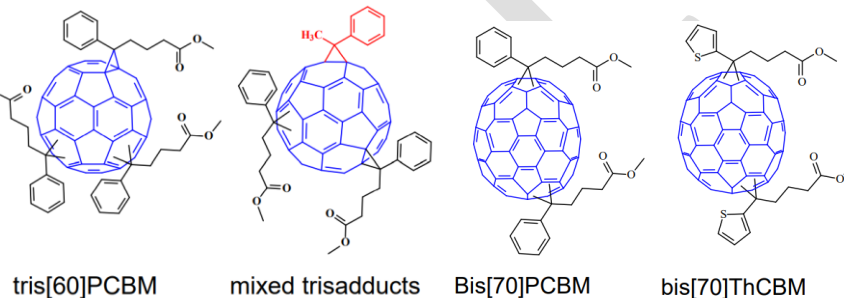
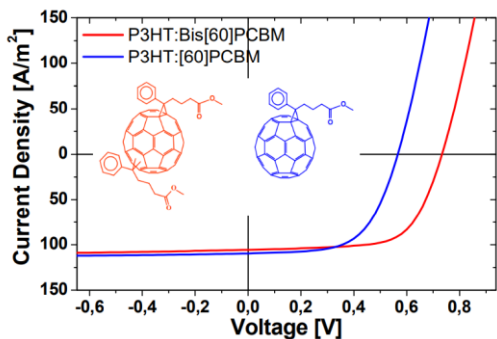


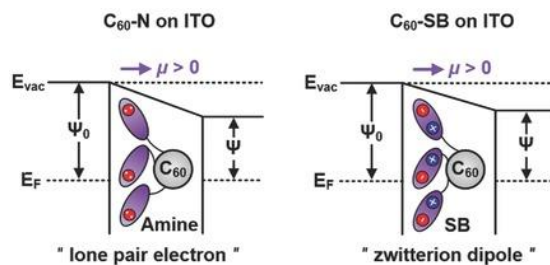
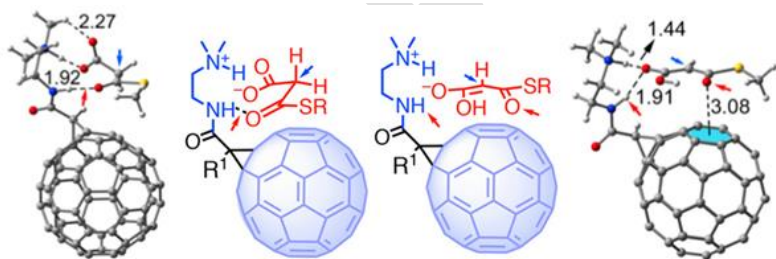
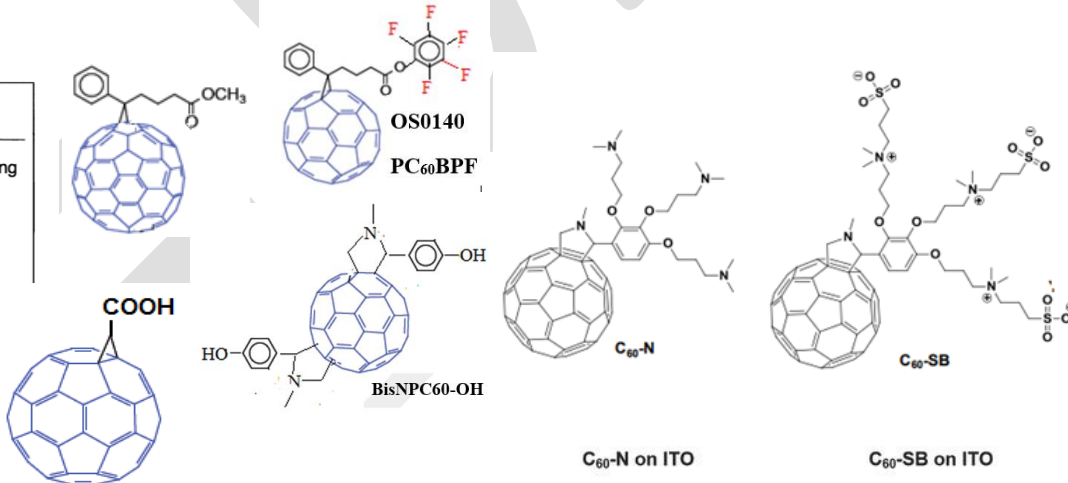
**Figure 1.** Structure of [70]fullerene:  $\alpha$ -,  $\beta$ -,  $\gamma$ -, and  $k$ -type



**Figure 2.** (a) Nomenclature of [60] fullerene bisadduct regioisomers. Structures of (b) [60]NCnBA and [60]NCBA, (c) [60]ICBA, and (d) *trans*-3 isomers of [60]ICBA.



C60-AC



## **(Fullerene Still Works)**

Examples of fullerene derivatives at your choice.

Common Name	1M Code	CAS# and Remarks
C60, C <sub>60</sub> fullerene	OS0600	CAS# 99685-96-8
C70, C <sub>70</sub> fullerene	OS0700	CAS# 115383-22-7
PC61BM, PC60BM, PCBM-60	OS0226	CAS#160848-22-6
Bis-PC61BM, Bis[60]PCBM	OS0226-2	CAS# 1048679-01-1
PC71BM, PC70BM, PCBM-70	OS0633	CAS# 609771-63-3
Bis-PC71BM, Bis[70]PCBM	OS0633-2	CAS# 1244023-34-4
PC61BPF, PC60BPF	OS0140	CAS# 1010806-14-0
TCBM	OS3036	CAS# 925673-03-6
ICBA, IC61BA, IC60BA, ICBA-60	OS0571	CAS# 1207461-57-1
ICMA, IC61MA, IC60MA	OS0571-1	CAS# 186682-36-0
ICTA, IC60TA, IC61TA	OS0571-3	
IC71BA, IC70BA	OS0571-C70	CAS# 1417860-26-4
SIMEF	OS0405	CAS# 169156-40-5
C60-SAM	OS0724	CAS# 631918-72-4
C60-AC	OS0191	CAS# 155116-19-1
C60-N	OS0295	CAS# 1642798-29-5
C60-SB	OS0308	CAS# 1642798-30-8
Yours to discovery	Custom made	CAS# 1234567-89-0

Other Fullerene-derivatives can be custom made, please contact [info@1-material.com](mailto:info@1-material.com) for your needs.

# (Fullerene Still Works)

## Selected Reference Presentation

